



TEOS
MANAGE

TEM-SRV250

Bring your workplace to life

Advanced workplace management software

Make your working environment smarter and more productive with TEOS Manage – the workplace management platform from Sony. The platform gives AV, IT, facilities and communications managers full control over devices, signage and content across the whole workplace ecosystem, from meeting rooms to reception areas. And, as your needs evolve, you can add further solutions with ease, including TEOS Book, TEOS Reception or TEOS Mobile.

The result is simple yet systematic working, tighter team collaboration and intuitive management tools for all your facility and resource needs.



SONY

Key Features

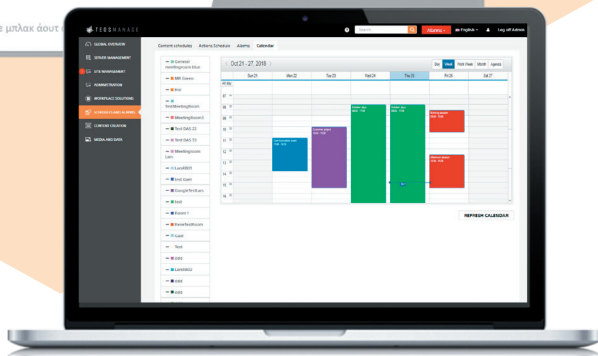
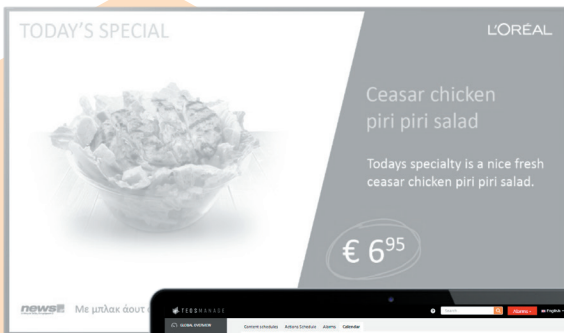
TEOS Manage gives organisations the power to transform their workplace so that device management is streamlined, usage of space is optimised, energy costs are reduced, communication is targeted, and worker productivity is amplified.

It's the most dynamic workplace management solution.



Full control of devices

- Sleek interface design for an intuitive user experience
- Control networked devices with the universal remote, and push advanced setting configurations with one click.
- View live device status and live signage content
- Group devices by location – building, floor, or site – for easy management
- Update firmware and Android applications remotely



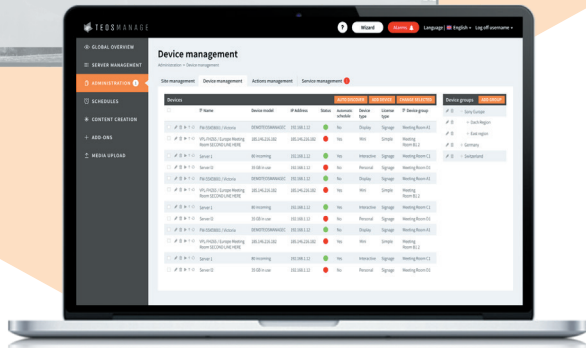
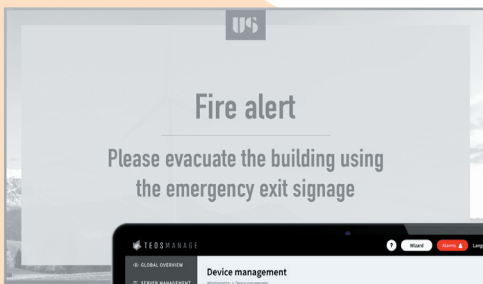
Schedule devices and content payout

- Schedule on and off times for each device
- Green management - save energy when devices not in use
- Schedule when to push signage content to devices
- Ensure that the right content is displayed on the right screen, at the right time.



A total view on workplace data

- Data from devices and spaces collected
- Advanced analytics presented in dashboard-style interface
- Filter data by timeframe or site
- Use insights to drive smarter decision making
- Secure and compliant with privacy regulations



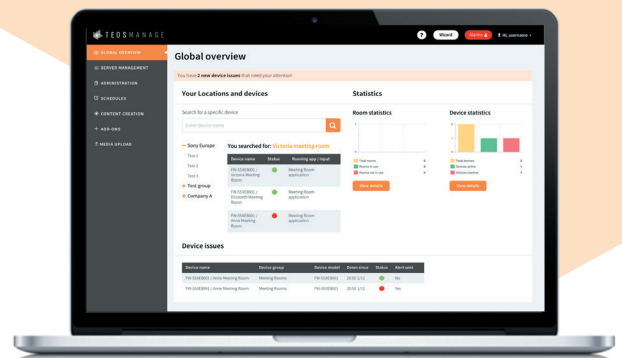
Rapidly pinpoint issues and send emergency alarms

- Receive alerts when a device is not working correctly
- Proactively fix issues in advance
- Push urgent alarm notifications to connected devices – such as fire emergency directions



Scalable and cost effective

- Cloud or on-site local deployment
- Scalable licensing scheme for solutions
- Wide device compatibility – including Sony, LG, Samsung, and Philips display screens, PJLink projectors, tablets. Other 3rd party brands upon request
- Simple installation and maintenance with remote configuration capabilities



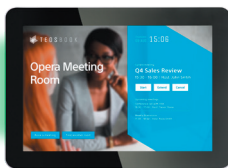
Solution Add-Ons

TEOS Manage doesn't just give you complete control of all your networked display devices and content. You can transform working even further with a complete family of corporate workspace solutions that are operated through TEOS Manage.



TEOS Signage

Create colorful, eye-catching, and touch-interactive digital signage and distribute it across networked screens.



TEOS Book

A complete room booking solution to save time, avoid double bookings and optimize the use of meeting spaces.



TEOS Mobile

A mobile application to manage meetings from anywhere. Combines not only room booking, but also room control, and mirroring, with no need to be on company network.



TEOS Reception

Offer an efficient, professional welcome to every guest while they check-in to automatically notify their host by email or text.



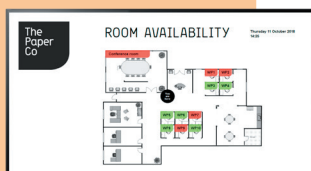
TEOS Room Control

Control connected meeting room devices from a customizable interface that integrates with professional grade tablets.



TEOS Survey

Get feedback from employees and guests with a completely customizable survey solution. View live survey results in TEOS Manage.



TEOS Wayfinding

Locate your meeting room, and navigate the workplace easily. See which rooms are available and which are booked.

Service Licences

	PS.TEM.1 (Standard)	PSP.TEM100.1X	PSP.TEM100.2X	PSP.TEM100.4X	PSP.CET.ENG-DAY.1	PSP.CET.ENG-DAY.T1	PSP.CET.REMOTE.2	PSP.CET.CUSTOM.1
PrimeSupport	Pro	Elite	Elite	Elite	On-Demand	On-Demand	On-Demand	On Demand
Description	Standard coverage, 1 year	1 year coverage extension	2 year coverage extension	4 year coverage extension	Engineering support for one day	Engineering support for one day + travel	Remote engineering support for 2 hours	Custom development by senior engineer
Duration	1 year	2 years	3 years	5 years	1 day (8 hours)	1 day (8 hours)	2 hours	1 day (8 hours)
PrimeSupport Helpdesk	✓	✓	✓	✓				
Software downloads and new features	✓	✓	✓	✓				
Remote support	✓	✓	✓	✓	✓	✓	✓	
On-site training					✓	✓		
On-site installation and configuration					✓	✓	Yes, but remotely	
On-site support					✓	✓		
Custom development								✓
Requirement	1 / device	1 / device	1 / device	1 / device	1 / site	1 / site	1 / site	1 / site

Customisation Services

Made to order content

PSP.CET.REMOTE.2

If you don't already have the resources to design high quality content, we can create it for you. Our team of writers and designers is ready to support you to make sure that you get your message across as effectively as possible.

Feature development

PSP.CET.CUSTOM.1

Every workspace is unique. At Sony we can create bespoke features and workflows for your environment, just like we have for ABUS (*customised visitor sign in*), Bondalti (*advanced interactive alarms using chemical levels*) and Cap Gemini (*automatic signage to save 45 minutes a day in updating content*).

The collage features several key elements:

- University of Science:** A large image of a wind turbine against a sunset sky.
- Weather Forecast:** A widget showing 'Thursday 11 October 2018, London, UK, Mostly sunny, 18°'.
- Event Schedule:** A list of events for 'The Paper Co':
 - 17th Talk: The Webcast London
 - 18th The Paper Club Thursday 18 October 2018, 18.30 – 21.00 London, UK
 - 22nd Talk: The Future of Print Monday 22 October 2018, 18.30 – 21.00 London, UK
 - 26th Workshop: Origins of Origami Friday 26 October 2018, 18.30 – 21.00 London, UK
- Trade Show Booth:** A 3D perspective view of a trade show booth layout with numbered zones:
 1. Conference room
 2. Hot desks
 3. Meeting pod 1
 4. Meeting pod 2
 5. Small conference room
 6. Presentation hall
- Graphic Elements:** A large origami crane graphic and the 'The Paper Co' logo.

Specifications

Technical Requirements	On premise / Cloud	Yes / Yes
	On premise (min requirements)	Min Windows Server 2012R2 / 16GB
Users	Number of users	No limitation
	Database compatibility	Active Directory
	Rights Management	Complete access customization, per size, device and content
	Active Directory Compatibility	Yes
Facility Management	Number of sites/rooms/spaces	No limitation
	Advanced analytics	Yes
	Alerts	Yes
Device Management	Remote Control & Monitoring	Yes (IP Control)
	Remote Scheduling	Yes
	Remote Firmware Update	Yes*
	Remote Android Applications Installation/Update	Yes*
	Sony devices compatibility	Professional BRAVIA, projectors, tablets**
	Other displays compatibility	Yes (Samsung SSSP2 or higher, LG (SNMP), Philips (IP control), NEC, CTOUCH)***
	Projectors compatibility	Yes (Pjlink IP protocol: Epson, NEC, Panasonic, Optoma, etc.)***
	Other devices compatibility	Yes (Printers, Barco Clickshare, etc.)***
Reception	Visitor Sign In Solution	Yes (TEOS Reception)
	Notifications	Yes (SMS and e-mail)
	Badge printing	Yes****
	Analytics	Yes
Meeting room	Room Booking Solution	Yes (TEOS Book)
	Room Control Solution	Yes (TEOS Room Control)
	Wireless Mirroring Solution	Yes (TEOS Connect)
	Calendar compatibility	Yes (Google Calendar, Microsoft Exchange, Office 365, TEOS Calendar, Scientia, Celcat)
	Mobile compatibility	Yes (iOS, Android)
	RFID/NFC Badges compatibility	Yes
	Customizable background	Yes
	Lockable secured interface	Yes
Signage	Signage Solution	Yes (TEOS Signage)
	Survey Solution	Yes (TEOS Survey)
	Content creation	Yes (Simple and Advanced)
	Content scheduling	Yes*****
	Main functions	Template design, Facebook, Instagram, Twitter, YouTube, websites, interactive content, PowerPoint, streaming, weather reports, RSS feeds, and many more.
	Live Screenshots / Proof of play	Yes / Yes
	Emergency alarms	Yes
	External data integration	Yes
	Basic signage via email	Yes
	Interactivity/Touch compatibility	Yes
Licences	TEM-SRV250	TEOS Manage software
	TEM-CO10	License for Simple Control use (1 per device required)
	TEM-MR10	License for Meeting Room use (1 per device required)
	TEM-TA10	License for tablet use (1 per device required)
	TEM-DS10	License for Signage use (1 per device required)
	TEM-UL10	License for Mobile Room Booking (floating license per user)
Warranty	Standard warranty	1 year for support and new features firmwares
	Extensions (one per device required)	PSP.TEM100.1X, 1 additional year
		PSP.TEM100.2X, 2 additional years
Service options	For additional service options, please see page 4	

*Sony Android devices only

**Tablets for TEOS: TEB-7DSQPM, TEB-10DSQPL, TEB-10SLb, TEB-15DSKP, TEB-22D

***Contact your Sony representative for exact list of compatible devices

****List of compatible printers available on demand

*****TEP-TX5 required for non-Sony Android devices

Solution Accessories

Bring your set up to life with our wide range of accessories, natively compatible with TEOS.

BRAVIA 4K Professional Displays

*BZ35 Series | XG8 Series
AG8/AG9 Series | ZG9 Series
XG7 Series | WG6 Series*

Bring the incredible depth and quality of 4K resolution to your business with our superior displays, designed to suit all your professional needs. Available in 32" to 98" screen sizes.



Tablets for TEOS

*TEB-7DQSPM | TEB-10DSQPL
TEB-10SLB | TEB-15DSKP
TEB-22DSK*

These high-performance Android tablets are a stylish addition to any meeting space. All come with a powerful processor, a state-of-the-art, responsive touchscreen and are available in a variety of sizes (7", 10", 15", 22").



Player for TEOS

TEP-TX5

Integrate the compact, 4K Android player with any networked device and access the full range of TEOS workspace solutions.



RFID card reader

TEB-RFID

Simplify your identification and access control with the RFID card reader. With just a simple swipe, instantly processes information from any NFC tag or card.



Distributed by

For full features visit pro.sony

© 2018 Sony Corporation. All rights reserved. Reproduction in whole or in part without permission is prohibited. Features and specifications are subject to change without notice. All non-metric weights and measurements are approximate. 'Sony' and 'BRAVIA' are registered trademarks or trademarks of Sony Corporation. All other trademarks are the property of their respective owners.

Sony is the leading supplier of AV/IT solutions to businesses across a wide variety of sectors including, Media and Broadcast, Video Security, Medical, Digital Cinema and Displays. It delivers products, systems and applications to enable the creation, manipulation and distribution of digital audio-visual content that add value to businesses and their customers. With over 25 years' experience in delivering innovative market-leading products, Sony is ideally placed to deliver exceptional quality and value to its customers. Collaborating with a network of established technology partners, Sony delivers end-to-end solutions that address the customer's needs, integrating software and systems to achieve each organisation's individual business goals. For more information please visit www.pro.sony.eu

Follow us on Twitter at [@sonydisplays](https://twitter.com/sonydisplays) | twitter.com/sonydisplays

SONY