



CONVIS 125

Slim & elegant

The **CONVIS 125** impresses with its clear, consistent, unique design. The wafer-thin monitor is milled from a single aluminium block. Equipped with a real glass front panel and the flat rear side it is only **8mm slim**.

The brilliant FullHD monitor is installed on a solid base with 30° angle of inclination for ergonomic viewing.

Designed for applications where the **smallest dimensions and a low overall height** are required. The monitor is made to be used flexibly, for example in meeting rooms, conference rooms, entrance halls, sales rooms and plenary rooms. Plug and play.

Shapely and solid. This is what a compact monitor for multifunctional rooms must look like.

Unique.
Made in Germany.
Made by ELEMENT ONE.

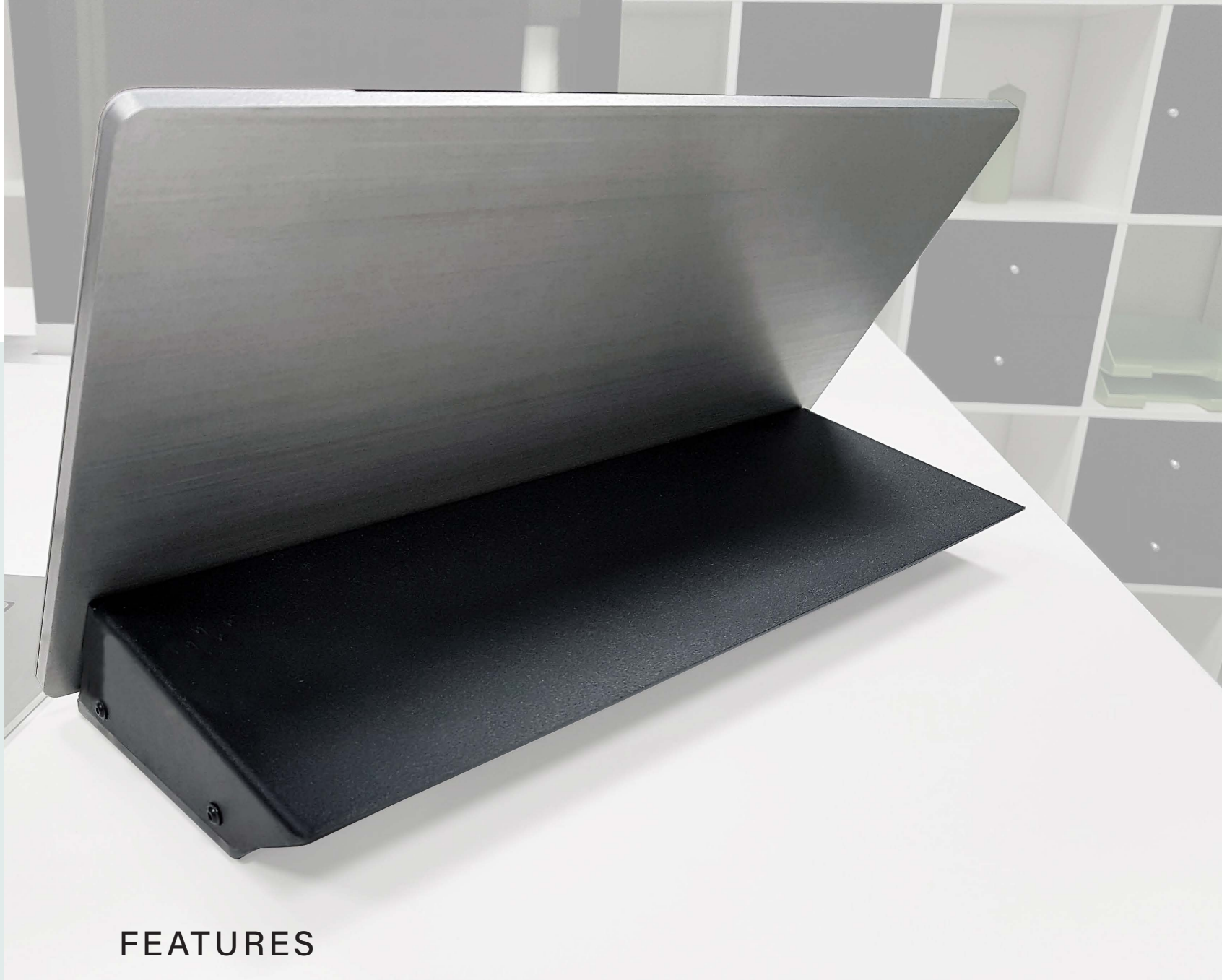


VERSATILE & FLEXIBLE

With or without built-in conference technology – and available in many different anodized colors: CONVIS 125 matches your technological & optical demands.

- Ultra Thin BLADE Monitor Housing 8 mm
- 30° fixed Monitor inclination
- 2 mm Anti-reflective safety glass
- Compact Housing Dimensions
- Milled aluminum, brushed, silver anodized Monitor-Housing
- *Optionally* with LED illumination in the base of the device*
- *Optionally* with integrated conference components - such as microphone, speaker, voting & selection buttons*
- Passive Cooling without Ventilation Openings
- HDMI HDCP compliant; FullHD
- EMC + EMV protected
- Maintenance free
- 5 years limited warranty

* on demand, for an additional charge



FEATURES

CONVIS 125

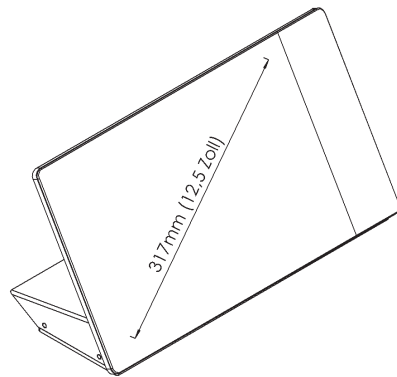
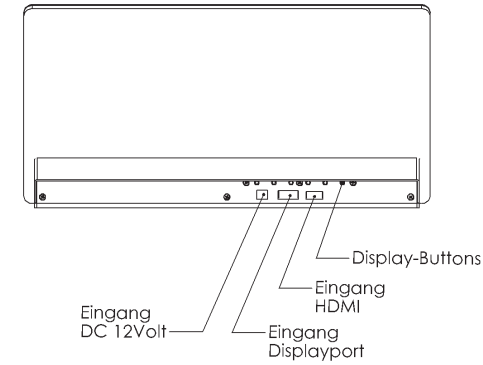
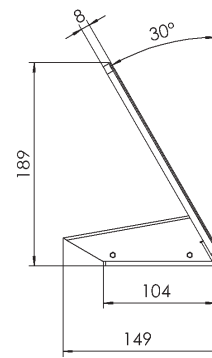
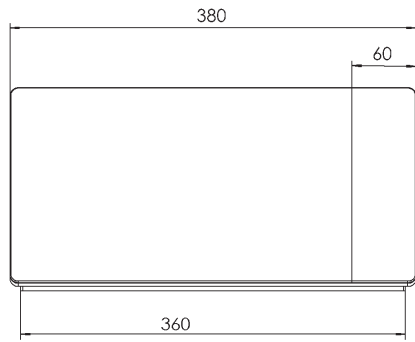


TECHNICAL DATA

Product Specification



Art.No.	450-125	Screen size:	12.5" (16:9)
Type	CONVIS 125	Resolution:	1920 x 1080 - Full HD, 262,144 colors
Function	Compact 12.5" Conference & Desktop Monitor with fixed 30° monitor inclination. 8mm thin BLADE display with flat rear side.	Brightness:	400 cd/m2
Material	Milled aluminum, silver anodized, 2 mm anti-reflective real glass Base: Powdercoated steel, black, fine texture, matt (RAL9011); acrylic glass, transparent, satined	Contrast:	(typ.) 700:1
		Viewing Angle:	Horizontal 160° / vertical 160°
		Response time:	35ms (typ)
		Viewing area:	276.480(H) x 155.520(V)
		Pixel pitch:	0.144mm x 0.144mm (176ppi)
		LED Life:	up to 12,000 hours
		Environment:	0°-50°C
		Mass:	2.3 kg
		Dimensions:	380 x 149 x 189mm (LxWxD)
		Power Consumption:	typ. 7W (with LED illumination: 9W)
		Inclination Angle:	fix 30° (optionally 60°; on demand)
		Video Interface:	HDMI, Displayport
		Warranty:	5 years (limited, see warranty specification)
		Scope of supply:	Desktop Power Supply - Input: 100-240V AC, 50 / 60Hz. 1.5A; Output: 12V 60W MAX 5.A (Cable length DC ~ 140cm) Power cord 2.0m



Dimensions



We'd be delighted to offer our expertise in the planning and selection of the right solution for your needs. If required, we can send further technical drawings, detailed photographs, material samples and, of course, demo devices – perfect to handle and try out.

Simply call us on +49 (0)7222 96654-20

Or send us an e-mail at: info@element-one.de

ELEMENT ONE

Multimedia GmbH

Zum Murgdamm 5

76456 Kuppenheim

Germany

Fon: +49 (0) 7222 966 54 20

Mail: info@element-one.de

www.element-one.de