



Fine Pitch LED Display System

www.deltadisplay.eu
www.deltaww.com



Precision Fine-Pitch Indoor LED with Superb Image Quality and Uniformity



Precision Fine-Pitch Indoor LED with Superb Image Quality and Uniformity

Make a move out of the traditional and into an innovative, fresh approach with Delta's indoor LED displays. Big enough to be seen, yet unobtrusive. Grandiose and bright to excel in large venues, without being blinded. It's your vision, but we'll help you perfect it with Delta's large selection of LED displays and knowledgeable team of engineers.

The Delta indoor LED series offers a large variety of tiles to perfectly fit any project requirements. Our indoor LED displays are sharp, stunning and designed to excel in high ambient light environments, capturing audience' attention and helping you provide an unforgettable experience.

FE Series

Delta's FE Indoor LED Display features a modern, sleek design and provides 1.26, 1.58, 1.9 and 2.5 mm pixel pitches each in 16:9 aspect ratio, to perfectly accommodate a wide range of viewing distances and applications. This seamless and high-resolution display provides wide-viewing angles, giving an immersive experience that maximizes audience engagement in short viewing distances.

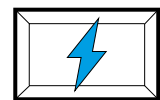


Fine-Pitch Precision & Installation

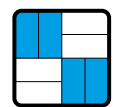
The FE's modern design allows installation precision with fine pixel pitches, in an exact 16:9 aspect ratio.

16:9

The 16:9 aspect ratio perfectly fits standard content and the fine-pitch pixels provide an outstanding image quality for up-close viewing distances.



The aluminum die-cast frame allows a quick installation with precision at the finest pitches



The FE Series' machined contact points between each tile provide superior accuracy and a seamlessly tight display



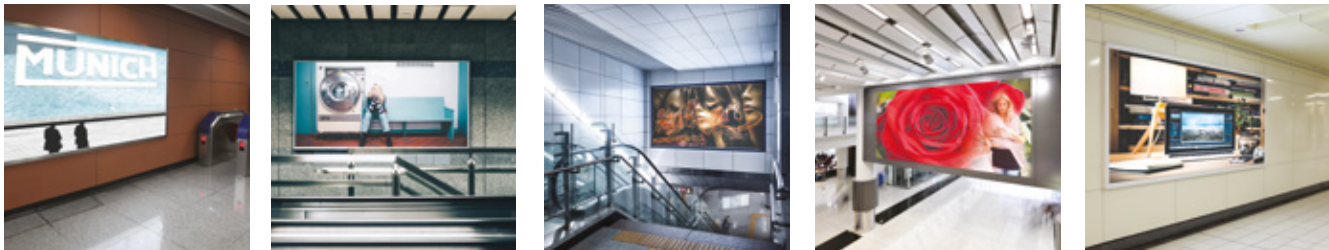
Advanced Image Technology

The FE Series provides solid performance with excellent uniformity, color and brightness over its lifetime.



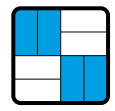
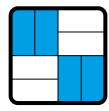
Every pixel is calibrated, creating a smooth and consistent brightness and color throughout the display, regardless of the size

Delta's FE Series offers an optional ambient light adjustment, emitting a bright and vibrant image no matter the ambient factors, such as bright, dark and variable lighting conditions



Quick & Simple Installation

A front service and install display, the FE is equipped with LED modules that attach magnetically for ease of installation and service.



Everything is easily accessible from the front of the tile

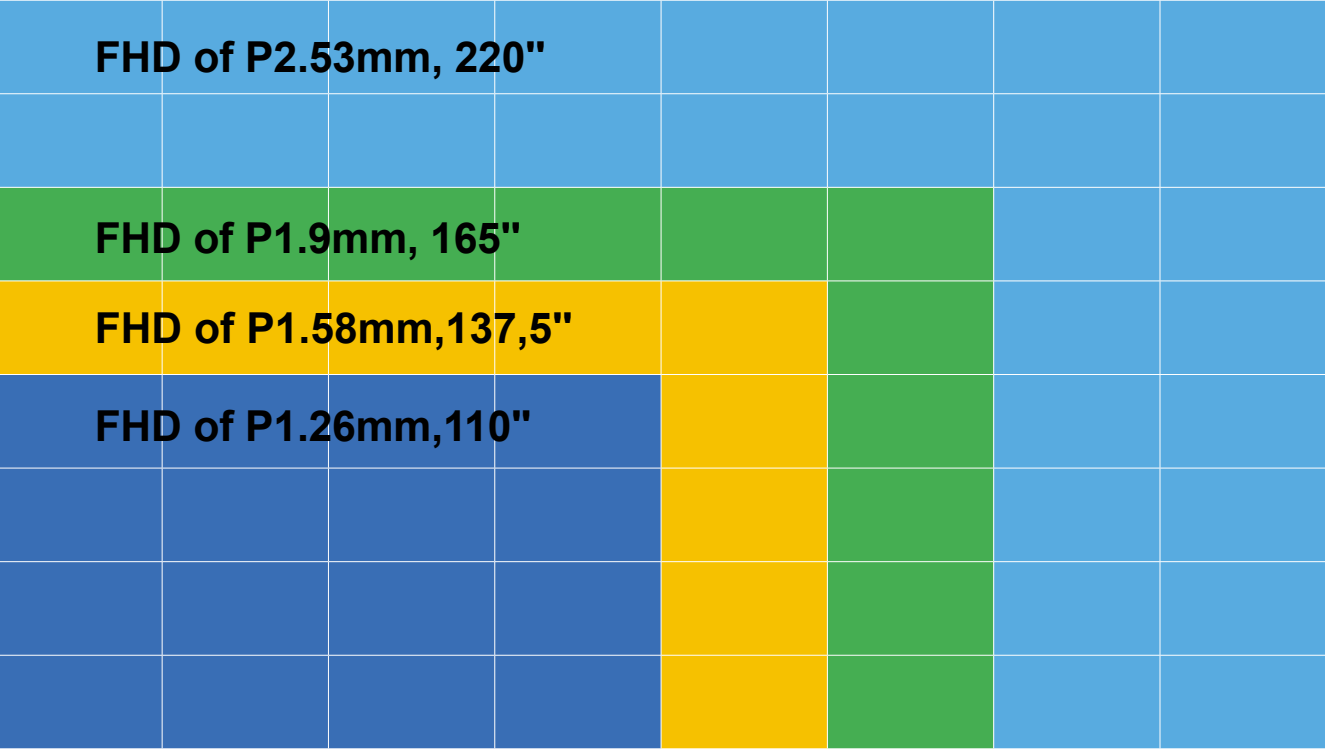
The FE Series is designed rugged with proven LED technology, providing a safe and valuable investment

Key Features

- Each tile is 16:9 aspect ratio with a 27" diagonal
- Cost-effective indoor SMD LED
- A seamless and high-resolution display that gives an immersive experience
- Wide viewing angles allow for maximum audience engagement in short viewing distances
- Minimal power consumption: Delta FE is designed with optimized power supplies to limit power consumption to a minimum, allowing for a low cost of ownership
- Rugged and lightweight design guarantees reliability
- Delta's uniformity calibration technology provides uniform colors and brightness
- Front installation options and a compact, lightweight design guarantees an easy, quick installation
- The ultimate indoor LED display for image quality assurance, color uniformity and low cost of ownership
- Certified UL, CB, CE, FCC, CCC



Outline of FULLHD FinePitchLED Monitors



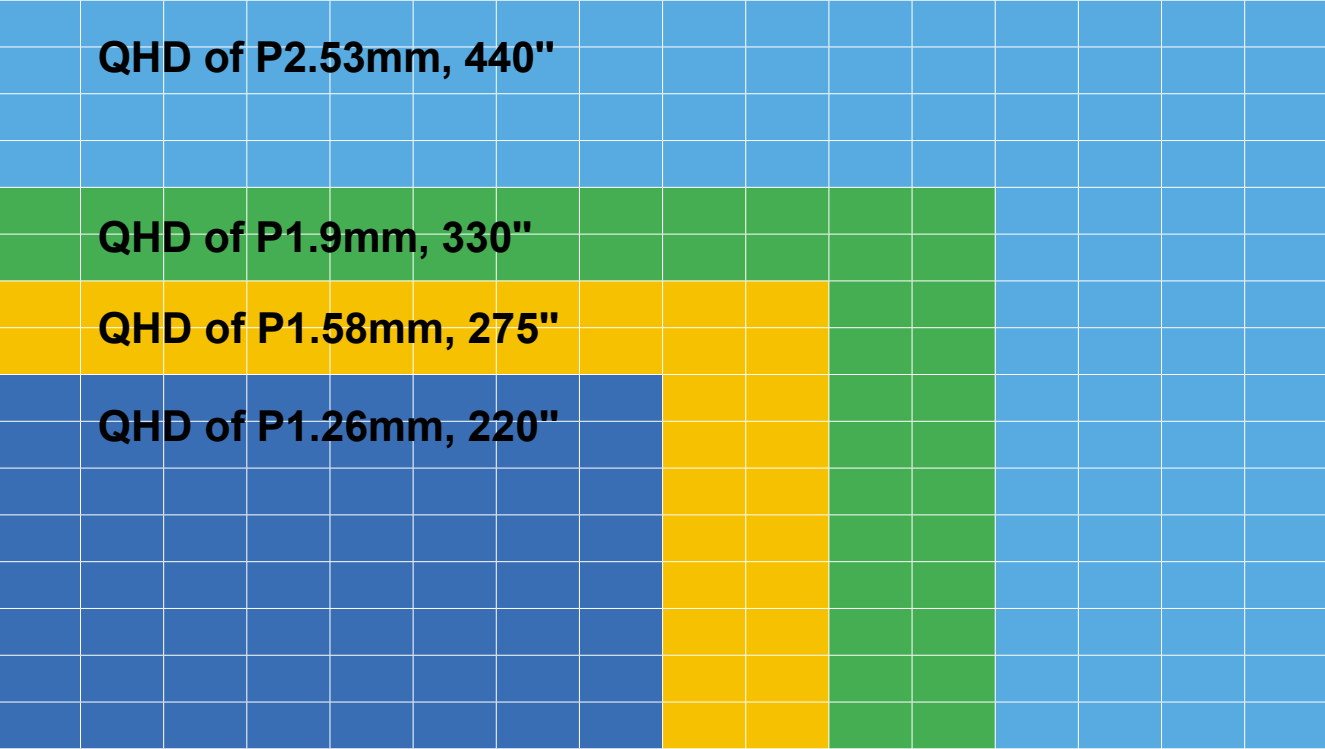
110" FE12 FullHD Monitor
Native Resolution: 1920 Pixel x 1080 Pixel
Monitor Size: 2432mm x 1368mm

137" FE15 FullHD Monitor
Native Resolution: 1920 Pixel x 1080 Pixel
Monitor Size: 3040mm x 1710mm

165" FE19 FullHD Monitor
Native Resolution: 1920 Pixel x 1080 Pixel
Monitor Size: 3648mm x 2052mm

220" FE25 FullHD Monitor
Native Resolution: 1920 Pixel x 1080 Pixel
Monitor Size: 4864mm x 2736mm

Outline of QHD FinePitchLED Monitors



220" FE12 QHD Monitor
Native Resolution: 3840 Pixel x 2160 Pixel
Monitor Size: 4864mm x 2736mm

275" FE15 QHD Monitor
Native Resolution: 3840 Pixel x 2160 Pixel
Monitor Size: 6080mm x 3420mm

330" FE19 QHD Monitor
Native Resolution: 3840 Pixel x 2160 Pixel
Monitor Size: 7296mm x 4104mm

440" FE25 QHD Monitor
Native Resolution: 3840 Pixel x 2160 Pixel
Monitor Size: 9728mm x 5472mm

LED Display Controller

Delta's LED display controller perfectly supports any type of video and data sources for any display configuration. The displayed content which comes in simultaneously from multiple sources can be presented across multiple display units as one large image, separate images, or a combination of both. Different types of controller options provide the right solution to meet your requirements.

LED controller sending unit is the next step from our base sending unit. It is a single space rack mount unit, which offers two or four CAT 5 outputs. Allowing for more redundancy and security.



A Modern Solution Approach

Wide selection
of panel

Display controller
(Delta Solutions)

Rich content
source provided -
NovoDS
(4K/UHD!)

Custom
mountings to fit
extravagant needs

LED Display Controller Specifications

Product name	DC-600	DC-500	DC-300
Image			
Control port	USB	RS232	USB
Video Inputt	HDMI / DVI	DVI	DVI
Signal Output	RJ45/Fiber-optic	RJ45/Fiber-optic	RJ45
Resolution	2.3million pixels	2.3million pixels	1.3million pixels
Maximum width output	2048 pixels	2048 pixels	1920 pixels
Maximum height output	1200 pixels	1200 pixels	1200 pixels
Power Input (AC)	AC 100 ~ 240V	AC 100 ~ 240V	AC 100 ~ 240V
Dimension (L x H x D)	482.6 x 44.45 x 250 mm	482.6 x 44.45 x 250 mm	204 x 48 x 145 mm
Weight	2.9Kg	2.9Kg	1.75 Kg
Audio Input	Yes	Yes	Yes
Operation Voltage	4.7~6V	4.7~6V	4.7~6V
Operation Current	0.45~0.7A	0.45~0.7A	0.45~0.7A
Operation Temperature	-20~75C	-20~75C	-20~75C
Operation Humidity	0%-95%	0%-95%	0%-95%
Storage Temperature	-20~75C	-20~75C	-20~75C
Storage Humidity	0%-95%	0%-95%	0%-95%
USB Cable	1.5M	1.5M	1.5M
DVI Cable	1.5M	1.5M	1.5M

Fine Pitch LED Display Specifications

DELTA Product Name		FE-12	FE-15	FE-19	FE-25
Pixel Pitch (mm)		1,266667	1,5833333	1,9	2.53333x2.5147
LED Type (black or white SMD/TH)		Black SMD			
LED Pixel configuration		SMD 3-IN-1			
Pixel Density (pixel/m2)		623 269	398 892	277 008	156 971
Brightness (cd/m2)	Native (max)	900	1000	1000	1000
	Calibrated	600 +/- 10%	800 +/- 10%	800 +/- 10%	800 +/- 10%
Dimming Capability		0-255 Level			
Contrast Ratio		≥3000:1			
Refresh Rate		2160Hz	3120Hz	3120Hz	3120Hz
Gray Scale		13bit	15bit	13bit	15bit
Colors		549 billion colors	35 trillion colors	549 billion colors	35 trillion colors
Viewing Angle	Horizontal	160° (+/- 80°)	160° (+/- 80°)	160° (+/- 80°)	160° (+/- 80°)
	Vertical	160° (+/- 80°)	160° (+/- 80°)	160° (+/- 80°)	160° (+/- 80°)
Lifetime		100,000hrs	100,000hrs	100,000hrs	100,000hrs
Power Input		100 ~ 240 VAC, 47 ~ 63 Hz			
Power Consumption (Calibrated)	Max. (W/Cabinet)	140	180	180	170
	Avg. (W/Cabinet)	47	60	60	57
Cabinet Size (mm; WxHxD)t		608(W)x342(H)x62+/-1(D)			
Weight (Kg/cabinet)		7.9+/-1			
Temperature	Operation	-10 to 40C			
	Storage	-20 to 60C			
Relative Humidity	Operation	10~90%RH			
	Storage	10~90%RH			
Service Access		Front			
IP Grade		F : IP40 / R : IP20			
Certification		UL,CB,CE,FCC, CCC			



Delta Electronics Inc.

Zandsteen 15,
2132 MZ Hoofddorp,
The Netherlands
e-mail: info@deltadisplays.eu

Tel: +31 20 800 39 60
Fax: +31 20 800 39 99
www.deltadisplays.eu